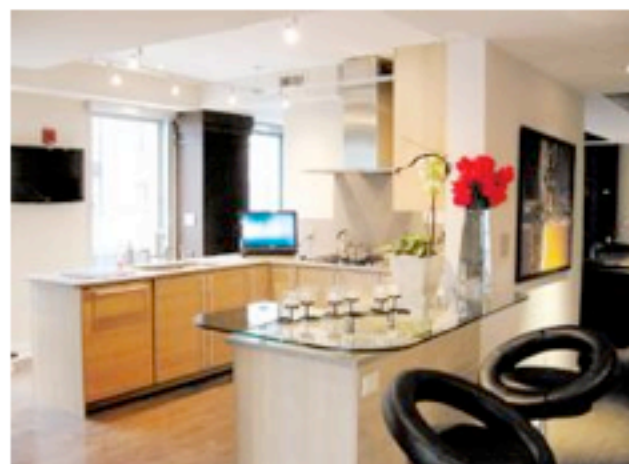


Penthouse at Folio Boston has wraparound deck



Slightly more than three years ago, two penthouses in the Financial District at sFolio Boston, 80 Broad St., were among 34 luxurious condominiums that were offered at auction.

One of the buyers decided to combine two 14th floor units into one grand home, gutting the brand-new space to create a palatial penthouse.

Anthony Rich of Northeast Development and Investment is now marketing this 3,165-square-foot home with four bedrooms and three-and-a-half baths with phenomenal views for \$3.499 million.

"The developer took the unit back to the studs and completely reconfigured it," said Rich.

The complex is unique, as it incorporates contemporary materials of glass, aluminum and steel with the adjacent brick building constructed in the early 1800s, which is attributed to Boston's first architect, Charles Bulfinch.

The entry lobby is anything but historic. It has a soaring ceiling and is beautifully appointed. A few steps down lead to a concierge station and the elevator lobby.

Inside the penthouse is a long foyer, with carved columns of quarter-sawn oak and recessed lighting to display objets d'art. The flooring is maple with a sable stain that creates a warm gray look without obscuring the wood grain.

down lead to a concierge station and the elevator lobby.

Inside the penthouse is a long foyer, with carved columns of quarter-sawn oak and recessed lighting to display objets d'art. The flooring is maple with a sable stain that creates a warm gray look without obscuring the wood grain.



The hallway opens into a large corner living/dining room with floor-to-ceiling glass. One interior wall, where a dining table and chairs have been placed, is actually a mirror, reflecting the furnishings and the natural light, giving a sense of expansiveness.

Glass doors open onto a wraparound patio encompassing nearly 1,200 square feet of space that presents fabulous views of the city and the water.

The large master bedroom can be accessed off the foyer. It too has floor-to-ceiling windows and a sumptuous master bath, tiled with Botticino Fiorito marble and designed so that you can soak in the deep tub and look out to Boston Harbor.

The lobby is large and welcoming. A reception area looks out onto Broad Street, and steps away are a concierge station and the elevators.

A double vanity and a glass-enclosed shower complete this room. Adjoining it is a walk-in closet with built-in Closet Tech shelving and hanging rods.

The kitchen lies just beyond the living/dining area and is both elegant and functional. It is wide with an inverted U-shape, with access to the outdoor patio.